

# Wireless Protocol Suite



**TELEDYNE LECROY**  
Everywhereyoulook™

## All Your Tools on One Dockable Screen

Teledyne LeCroy's Wireless Protocol Suite combines Frontline's decades of protocol analysis experience and up-to-the-moment spec support with a streamlined interface, bringing all analysis tools into a single dockable framework that can be customized to your own preferred way of working and evaluating information. When paired with Teledyne LeCroy's uniquely portable and configurable family of wireless protocol analyzers, the Wireless Protocol Suite delivers a world class software experience to anyone working with technologies that utilize the 2.4GHz ISM band.

The Summary pane uses tabs to display packets by technology, profile and errors for easy sorting, viewing and troubleshooting.

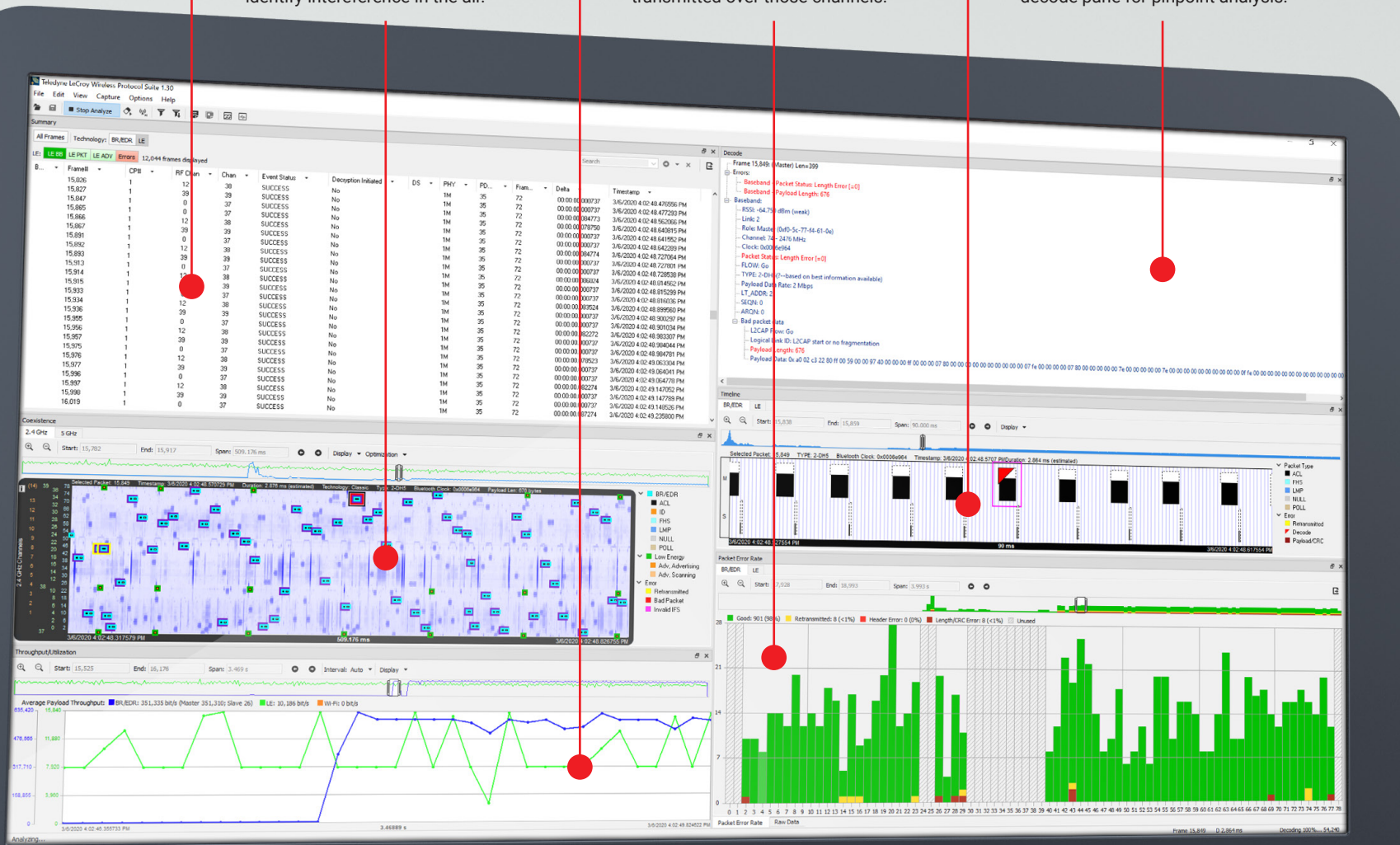
View average throughput and airtime utilization by technology for a holistic view of your device's transmitted traffic.

The Timeline View makes it easy to follow and analyze all Master and Slave connections, including packet and error type information.

Coexistence View time-syncs packets of different technologies over optional spectrum data to help identify interference in the air.

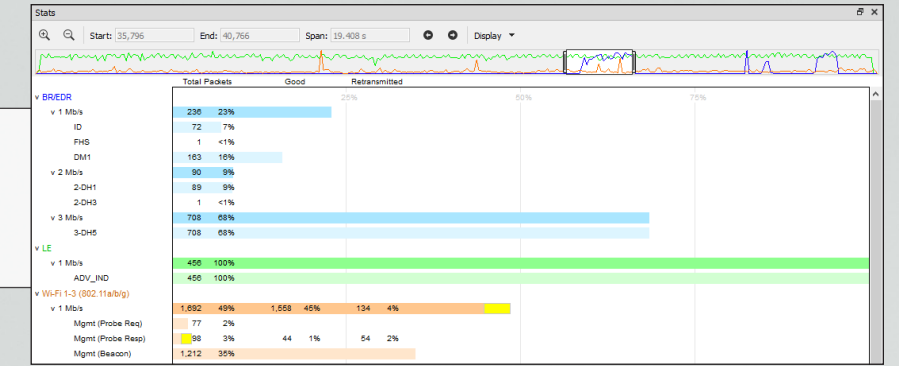
The Packet Error Rate provides a bird's eye view of channel usage along with the quality of the packets transmitted over those channels.

Select a packet in the Summary pane and drill down to every detail of that selected packet in the decode pane for pinpoint analysis.



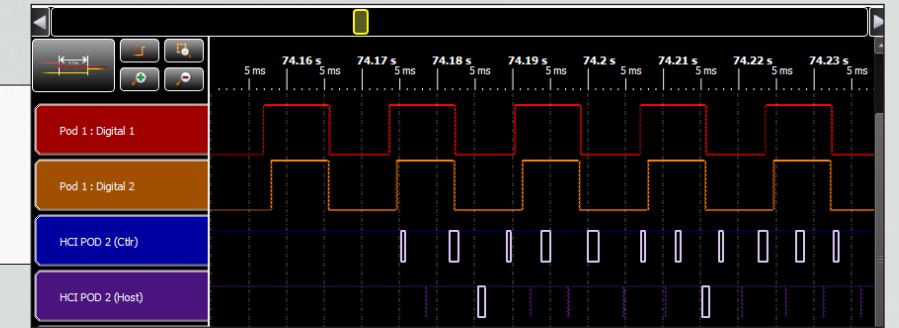
### Stats Pane

By providing packet statistics for total, good, and retransmits by packet type for user-selectable durations, Stats View provides a quick visual snapshot of overall transmission quality.



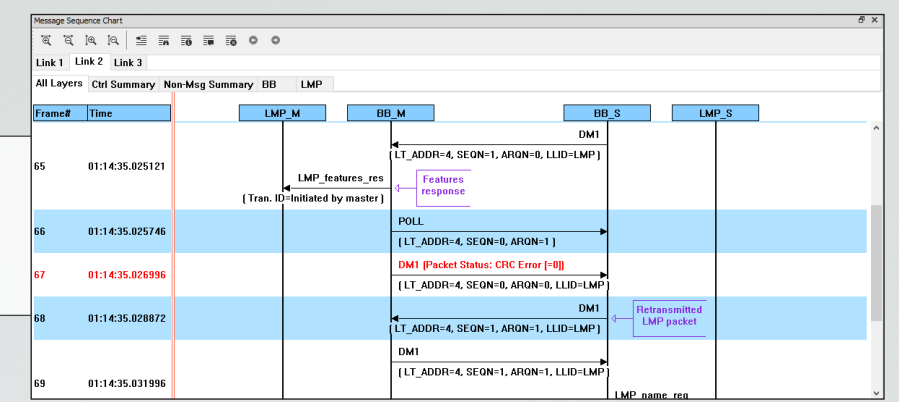
### Logic Analyzer

The Logic Analyzer displays and measures HCI UART and USB data logic signals, and can simultaneously include Bluetooth packets time-synchronized with those captured logic signals.



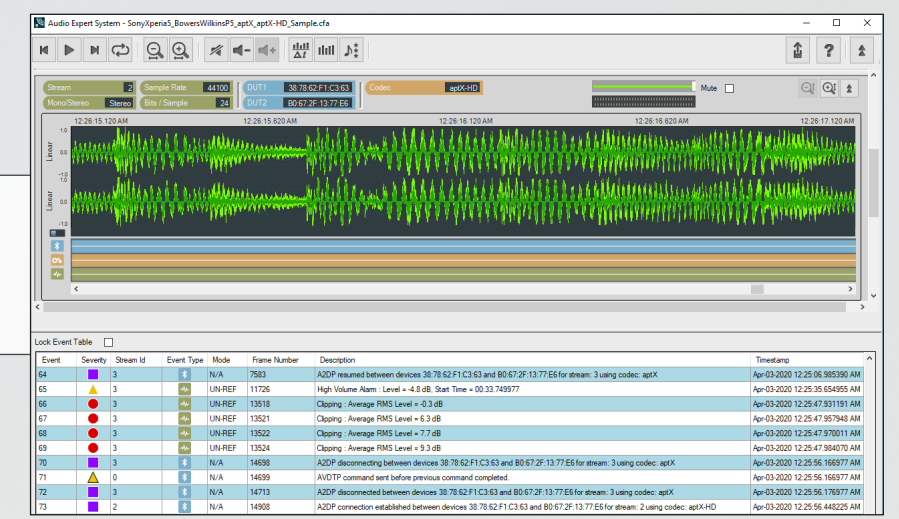
### Message Sequence Charts

Message Sequence Charts provide a visual sequential representation of the conversation between two devices, organized by protocol layer for maximum ease of use.



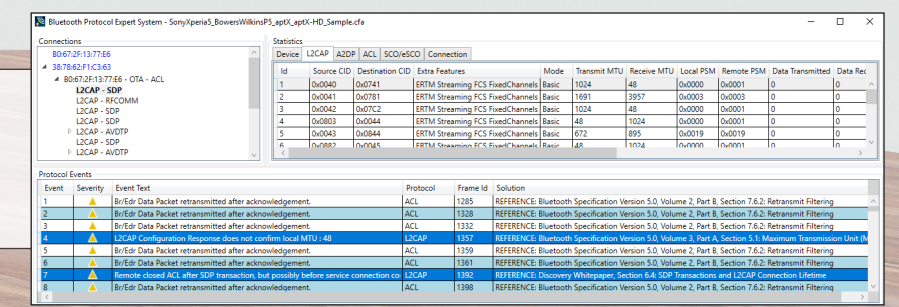
### Bluetooth® Audio Expert System

The Bluetooth Audio Expert System speeds root cause analysis of Bluetooth-related audio issues by correlating, visually and with real-time audio playback, protocol and codec events to audio errors.



### Bluetooth Protocol Expert System

Utilize the Bluetooth Protocol Expert System and Toolbox to identify violations, warnings and errors within a Bluetooth trace, with direct references to the spec for quick and concise resolution.



# Wireless Protocol Suite



To schedule a demo or to learn more about Teledyne LeCroy's Frontline family of wireless protocol analysis tools:

Email [frontline\\_onsales@teledyne.com](mailto:frontline_onsales@teledyne.com)  
or call (800) 359-8570.

Visit [fte.com](http://fte.com) for more information.

