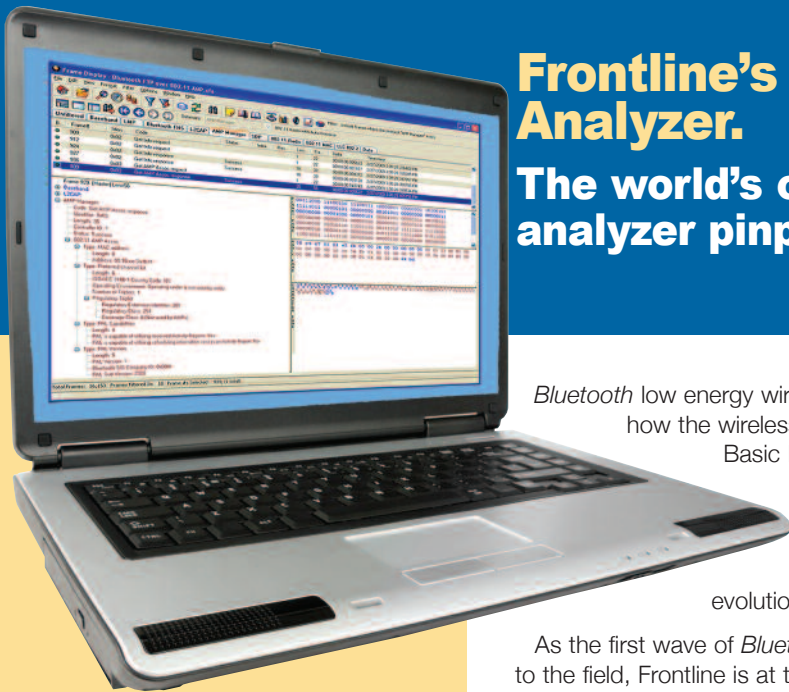


Frontline's Bluetooth low energy Analyzer.

The world's only Bluetooth low energy analyzer pinpoints protocol issues fast!



Bluetooth low energy wireless technology is an emerging specification and will change how the wireless world connects. Consuming only a fraction of the power of Basic Rate/Enhanced Data Rate Bluetooth wireless technology, it will allow hundreds of millions of new wireless devices to interoperate within the Bluetooth ecosystem. From watches, sports and fitness devices, to wellness, healthcare, and more, this new technology is expected to greatly accelerate the wireless evolution.

As the first wave of Bluetooth low energy products begins to move from the laboratory to the field, Frontline is at the forefront, meeting the needs of Bluetooth low energy developers for debugging, testing and verification...*fast!*

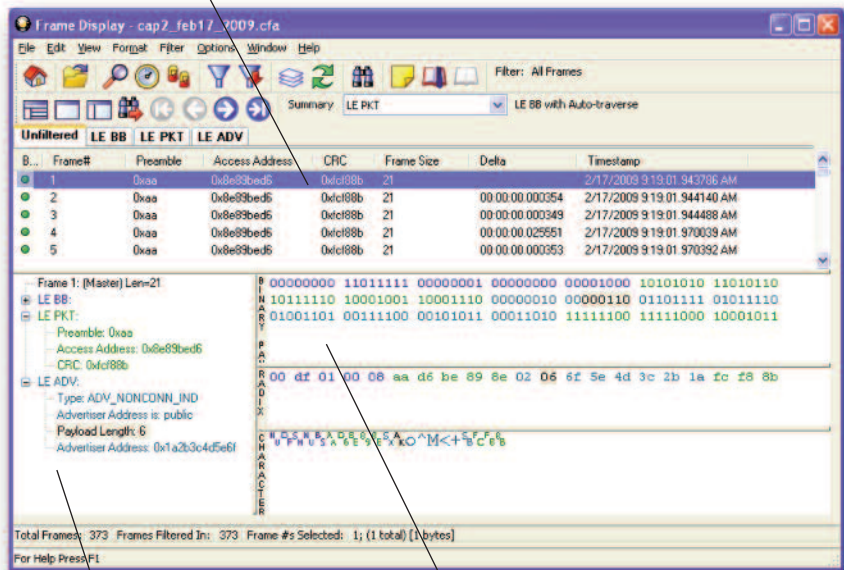
Frontline Bluetooth low energy analyzer features:

- Easy setup. Just start capturing.
- No need to synchronize to devices.
- Scans and captures all three advertising channels concurrently.
- Decode all traffic:
 - Advertising packets
 - Data packets
 - LL control packets
- Includes DecoderScript which allows specifying decodes for custom protocols.
- Follow multiple CONNECT_REQ from the same master and capture the resulting connections.
- Follow CONNECTION_UPDATE_REQ and CHANNEL_MAP_REQ.
- Follow pairing and decrypt encrypted traffic.
- Visibility into all three advertising channels, even before connection is established.
- Ability to turn off whitening.

Developers and Test Engineers rely on Frontline Tools

Frontline is the acknowledged industry leader when it comes to Bluetooth sniffers. The Frontline Bluetooth low energy analyzer is a new family member of the trusted FTS4BT analyzer and delivers the same dependable performance developers and test engineers have come to expect from Frontline. Just plug it in and go. The set up is easy and no synching is required. The Frontline low energy analyzer is an invaluable tool to help developers and testers get through the design, debug, test, verify and qualification cycle quickly and reliably. In fact, no matter where you are in the chain, the Frontline low energy analyzer will help you get your low energy wireless products to market sooner.

Summary pane: Displays and decodes the most important fields in the selected low energy protocol layer, so that you can analyze them in a glance.



Decode Pane: All captured data is decoded and verified in English in accordance with the specification

Raw Bytes: Shown in Binary, Hex and ASCII.



Frontline's Bluetooth[®] low energy Analyzer. Unequaled Protocol Analysis only from Frontline.

HARDWARE SPECIFICATIONS

● Bus Type:

USB 2.0 Type A, compatible with USB1.1

● Operating Frequencies:

2402 MHz – 2480 MHz

● Power:

AC Adapter supplied. The outputs of the adapter is 9Vdc – 24Vdc; 2A. The AC Adapter meets the following approvals: IEC 60950-1:2005.

● Dimensions:

6.57" X 4.92" X 1.96"

167mm X 125mm X 50mm

● Weight: 1lb 7oz / .771g

● Temperature:

Operating and storage:
0 to 40 degrees Celsius
32 to 104 degrees Fahrenheit
Operating Temperature: -55°C to 125°C

● Humidity:

Operating: 10% to 90% RH (non-condensing)

MINIMUM PC REQUIREMENTS

- Requires a Pentium PC 2GHz or faster, Windows XP (32 bit) or Windows 7 (32 bit & 64 bit) with a USB port plus 2GB of RAM and 50MB free disk space.

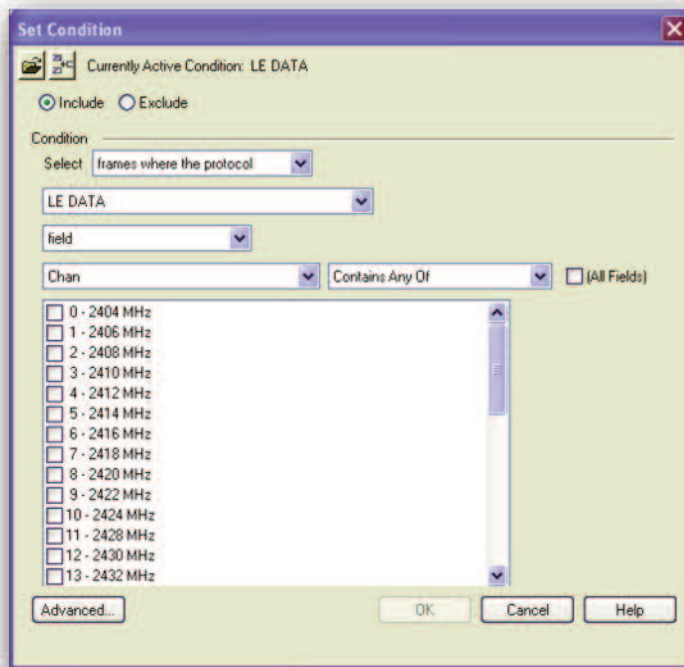
THE FRONTLINE EDGE

Frontline has been a proven protocol analyzer industry leader since 1985. The Frontline *Bluetooth* low energy analyzer is a member of the growing family of Frontline protocol analyzers, each of which incorporates our time-tested user interface and the DecoderScript protocol decoding language. Frontline analyzers support serial, Ethernet, *Bluetooth*, USB, ZigBee™ and numerous industrial protocols and buses such as Modbus, DH+, and DeviceNet ProfiNet.

FREE PREMIUM MAINTENANCE

The Frontline *Bluetooth* low energy analyzer is covered free for one year by your Premium Maintenance agreement so you'll receive free software, firmware, and protocol decoder upgrades for the term of your agreement. After a year, Premium Maintenance may be extended inexpensively. Bluetooth low energy technology moves fast; with Frontline products, so can you!

DISPLAY FILTERS MAKE ZEROING IN ON DATA FAST AND EASY!



ORDERING INFORMATION:

Sales@fte.com / 1.800.359.8570 US & Canada / +1.434.984.4500 / www.fte.com

frontline FTE.COM
Debug Communications Faster!SM

Sales@fte.com / 1.800.359.8570 US & Canada / +1.434.984.4500 / Fax: 434.984.4505

© Copyright 2009. Frontline Test Equipment, Inc. All rights reserved. Frontline *Bluetooth* low energy analyzer and the Frontline logo are trademarks. *Debug Communications Faster!* is a service mark, and Frontline is registered trademark of Frontline Test Equipment, Inc. The *Bluetooth* word mark and logos are registered trademarks owned by Bluetooth SIG, Inc. and any use of such marks by Frontline is under license. Other trademarks and trade names are those of their respective owners.